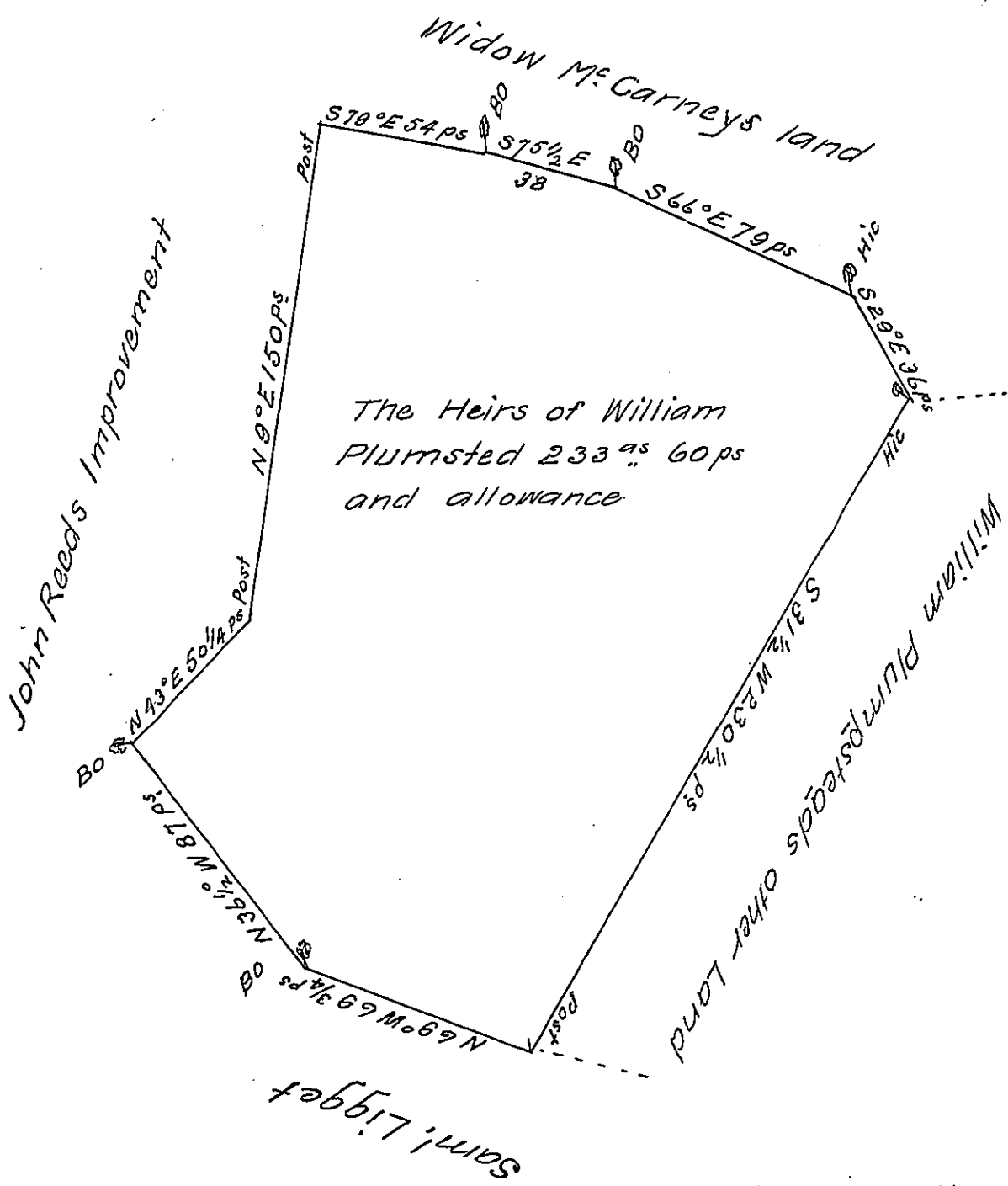


FORM NO. 1.



A Draught of a Tract of Land Situate in Hamilton Township
 in the County of Cumberland Containing Two Hundred
 and thirty three acres and sixty perches and the usual
 allowance of Six & Cent for Roads &c Survey'd for the
 Heirs of William Plumsted

John Armstrong

To John Lukens Esq^r
 Surveyor General

D.S.

IN TESTIMONY that the above is a copy of the original remaining on file in
 the Department of Internal Affairs of Pennsylvania, made
 conformably to an Act of Assembly approved the 16th day of
 February 1833, I have hereunto set my hand and caused
 the Seal of said Department to be affixed at Harrisburg,
 this twelfth day of November 1907.

Henry Houett
 Secretary of Internal Affairs.